



Antennas

Covering Broad Bandwidth & Higher Power for the Total Solution

The antennas you need for virtually any testing procedures are right here at AR. We offer a complete variety of rugged, high-power antennas; and since all are frequency and power matched to AR amplifiers, it's easy to select exactly the right unit.

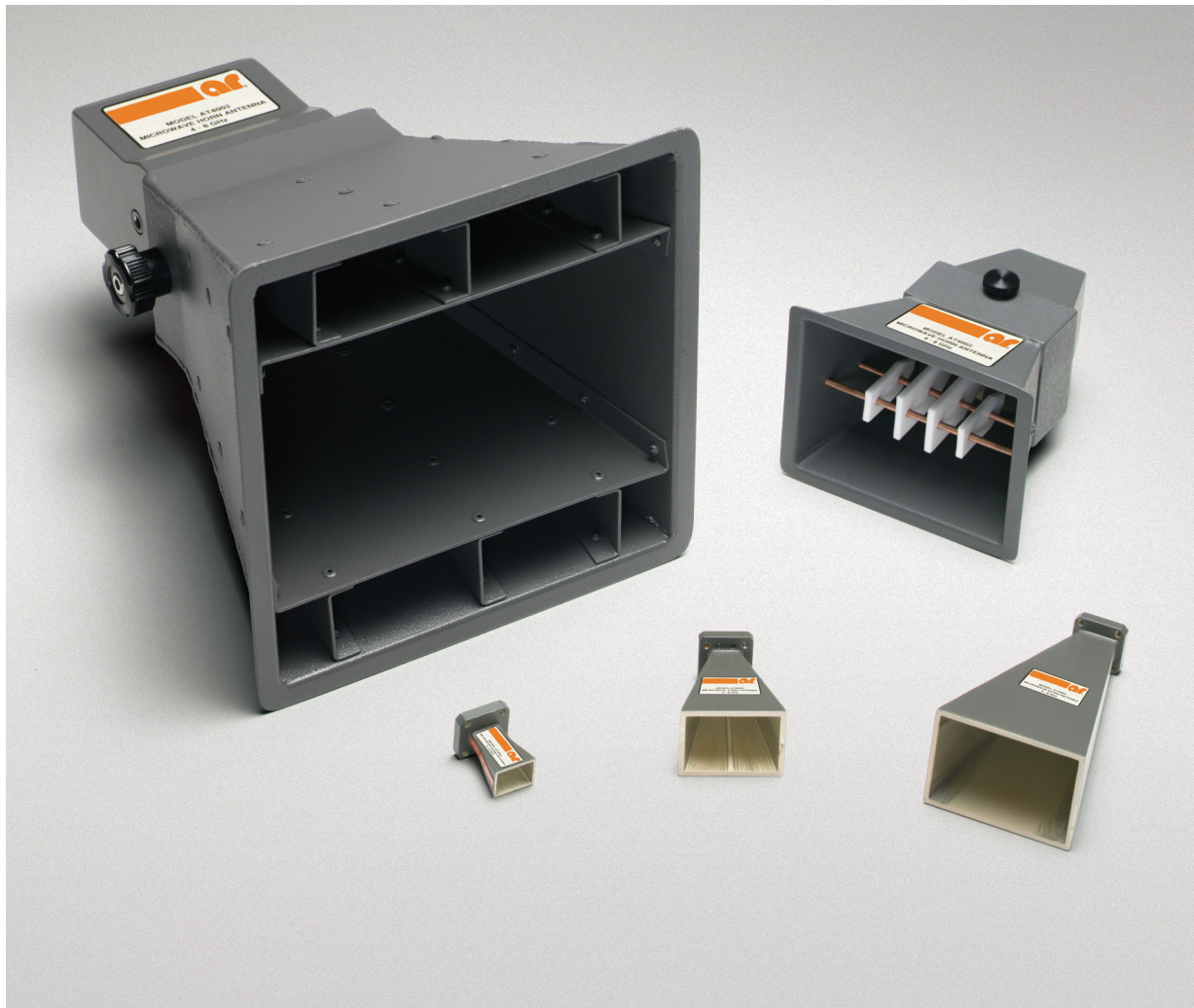
<a href="#">System Solutions</a> .....	3
<a href="#">Multi-tone Systems</a> .....	4
<a href="#">Solid State Field Generating Systems</a> .....	5
<a href="#">Why an AR System is a Smart Choice</a> .....	6
<a href="#">AR Support &amp; Service</a> .....	7





Antennas are available up to 50 GHz and 15,000 W of input power. All AR antennas develop high fields, suitable for EMC testing; and many models can be calibrated for emissions testing. No matter which antennas you choose, you'll feel secure knowing that your purchase is and they are backed by AR's warranty, the best and most comprehensive warranty in the industry. You will also find a number of innovative antennas here, with features available exclusively from AR, along with a full line of accessories. Contact our applications engineer for assistance selecting the best antenna for your needs.

---



# Broadband Logs

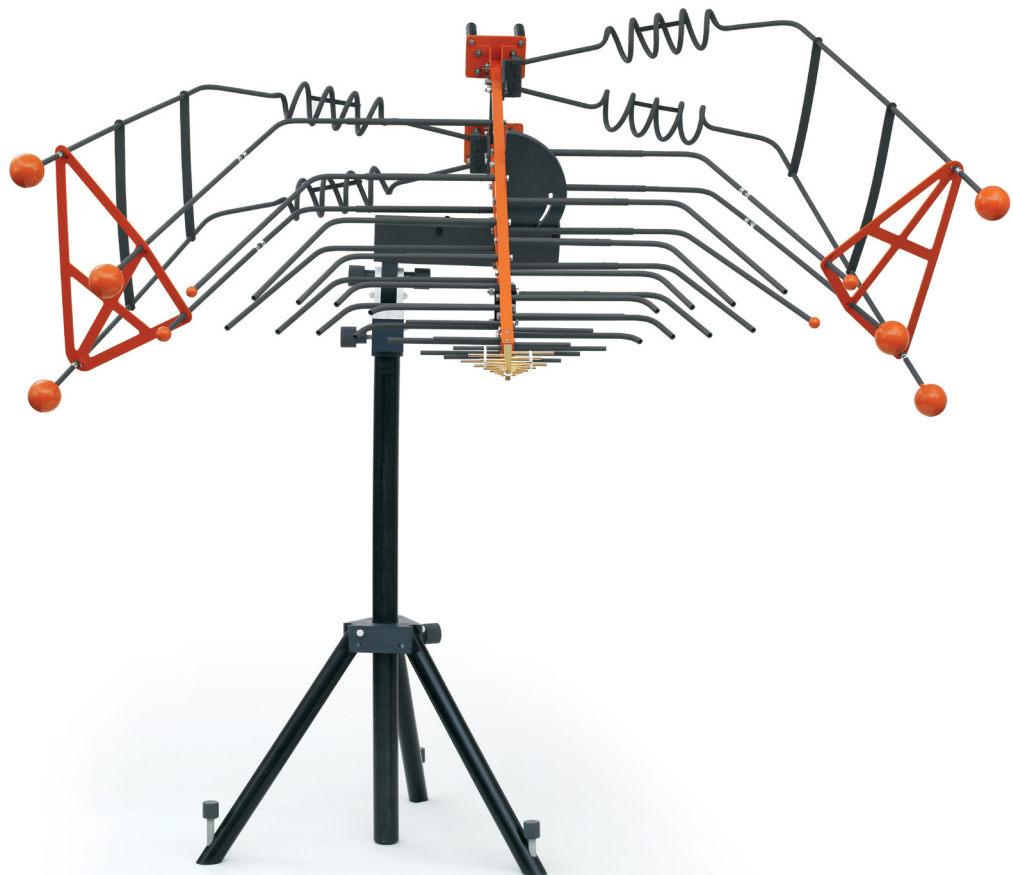
For RFI & EMI Testing, 26 MHz - 12 GHz

---

These rugged, dependable high gain log periodic antennas give you the constant high intensity fields you need for RFI and EMI testing in and out of a shielded room. They deliver frequency response and field intensity beyond the norm. AR's log periodics are designed for high power radiated testing and can be calibrated for emissions.

The Radiant Arrow® has extremely low VSWR making it an excellent choice for high field-strength immunity testing. This antenna provides a size reduction without sacrificing key electrical performance characteristics.

The AR family of bent element antennas represents a significant advance in the science of log periodic antennas. The patented Radiant Arrow accepts up to 5000 W input power, offers 6.0 dBi ( $\pm 1.5$ ) of gain, and produces a high field even in the toughest applications. Appropriate for emissions testing, the Radiant Arrow is Efficient, compact, and portable.



# High-Gain RF Horns

200 MHz - 1000 MHz, to 800 V/m

---

Our high-gain horn antennas operate over a wide band of frequencies and exhibit considerable gain, helping to compensate for losses that occur elsewhere in an RF test system. AR's high-gain horn antennas are best suited for use with a high-power amplifier to generate high-intensity fields, however, they can be calibrated for use in RF emission testing. They are compact and lightweight for ready mobility for use in shielded rooms or free



## Microwave Horns

For RF & EMC Testing, 200 MHz - 50 GHz

---

AR Microwave horns take microwave coverage to a new level. Our broadband RF and microwave horn antennas are specially designed to compensate for the losses that typically occur in test systems as frequency increases. They exhibit increasing gain with increasing frequency, up to 50 GHz. AR microwave horn antennas can be used in shielded rooms or in free space.





AR's E-field generators accept the high-power inputs needed to generate intense E-fields for susceptibility testing at low frequencies. They offer exceptional uniformity between the elements and are small enough to be easily handled in a shielded room. Our E-Field generators use low inductance high-power internal load resistors to terminate RF power, and an impedance transformer that handles the full power specification over the full frequency range without the need for band switching and without saturation. These features provide a well-matched input VSWR with relative freedom from reflections caused by the test object. We haven't yet found a test object AR's E-Field Generators can't handle.

---

## E-Field Generators

For EMC Testing, 10 kHz – 100 MHz,  
1000 V/m Between the Elements



# Tripods, Stands & Positioners

---

Field strength varies based on the frequency and position of your antenna. Mounting your antenna to a tripod allows for easy rotation of the antenna to the desired position. All of our antennas are designed to mount easily on a tripod or to a mounting plate. Antenna mounting adapters are also available for older versions of the AT1000, AT1080, and AT5080 antennas. Positioners are available for the larger horn antennas. All of these devices allow for vertical and horizontal polarization changes without removing the antenna from the tripod/positioner.



# AR Test Systems with a Peace of Mind

---

One of the added benefits of an AR antenna is peace of mind. AR antennas are designed and built to the highest quality standards, and backed by the most comprehensive warranty in the business and a global support network.

Antennas by AR can deliver a solution that integrates all your RF & EMC testing needs. Call us at 215.723.8181, email [info@arworld.us](mailto:info@arworld.us), or visit our website [www.arworld.us](http://www.arworld.us) to learn more.







Visit our website to learn more about our additional Total Solutions offerings:

- Amplifiers
- Accessories
- Chambers
- Software
- Systems

AR RF/Microwave Instrumentation  
160 Schoolhouse Rd, Souderton, PA 18964

(215) 723.8181  
[www.arworld.us](http://www.arworld.us)



We're with you all the way





Antennas

Covering Broad Bandwidth & Higher Power for the Total Solution